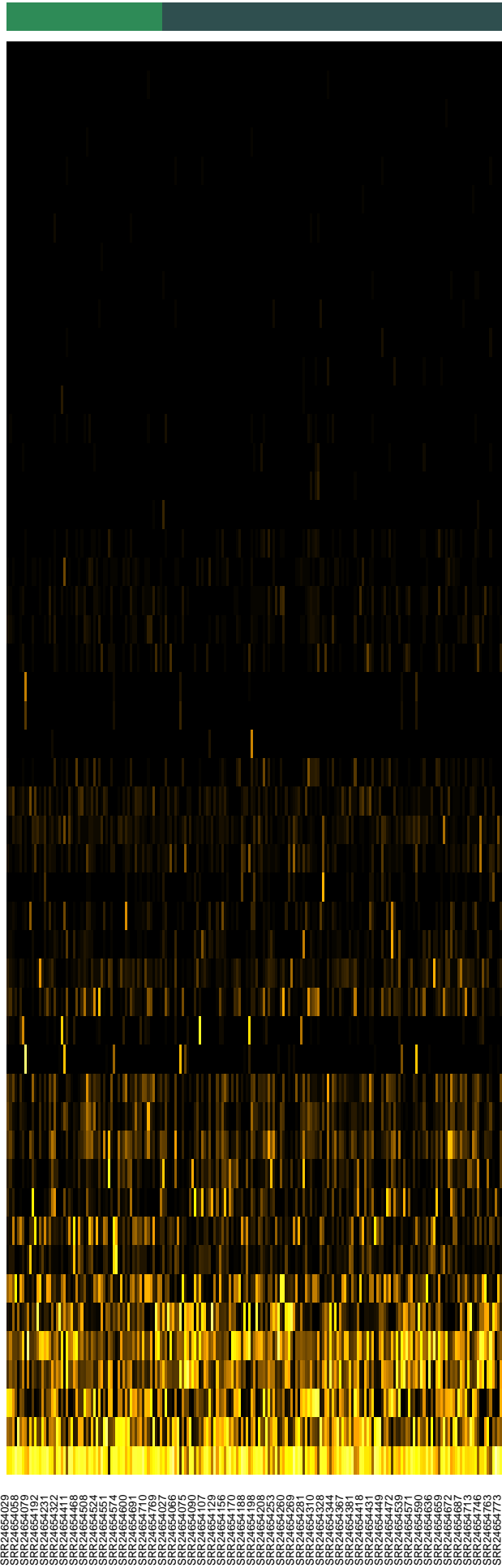
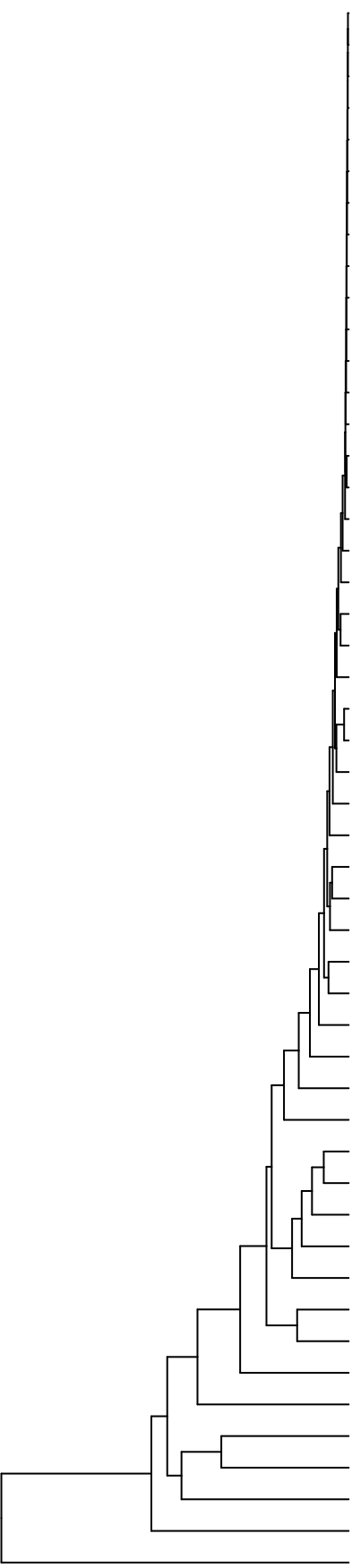




Caries_Source
 EC plaque
 AC plaque



- Conchiformibius_Kingella
- Absconditabacteria_(SR1)_[G-1]
- Gracilibacteria_(GN02)_[G-1]
- Lachnospiraceae_[G-3]
- Peptoanaerobacter_Peptostreptococcaceae_[XI][G-7]
- Saccharibacteria_(TM7)_[G-6]
- Ruminococcaceae_[G-1]
- Enterococcus
- Eikenella
- Eikenella_Neisseria
- Bacteroidales_[G-2]
- Aggregatibacter_Necropsobacter
- Arachnia
- Tannerella
- Centipeda_Selenomonas
- Lachnospiraceae_[G-2]
- Gracilibacteria_(GN02)_[G-2]
- Campylobacter
- Bergeyella
- Schaalia
- Lachnoanaerobaculum
- Saccharibacteria_(TM7)_[G-1]
- Pseudomonas
- Acinetobacter
- Moraxella
- Selenomonas
- Abiotrophia
- Granulicatella
- Gemella
- Alloprevotella
- Aggregatibacter
- Cardiobacterium
- Kingella
- Prevotella
- Peptidiphaga
- Sphingomonas
- Porphyromonas
- Fusobacterium
- Capnocytophaga
- Kingella_Neisseria
- Neisseria
- Haemophilus
- Lautropia
- Veillonella
- Rothia
- Actinomyces
- Corynebacterium
- Leptotrichia
- Morococcus_Neisseria
- Streptococcus

Genus

SR24684028
SR24684058
SR24684192
SR24684322
SR24684411
SR24684468
SR24684524
SR24684551
SR24684674
SR24684690
SR24684769
SR24684770
SR24684767
SR24684775
SR24684890
SR24684907
SR24684956
SR24684170
SR24684188
SR24684208
SR24684253
SR24684260
SR24684281
SR24684310
SR24684328
SR24684367
SR24684381
SR24684418
SR24684449
SR24684472
SR24684539
SR24684560
SR24684636
SR24684659
SR24684662
SR24684713
SR24684746
SR24684773

Samples